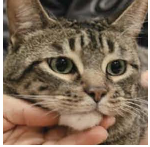


How to Brush Your Pet's Teeth

STEPS

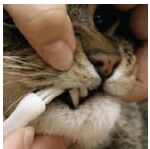
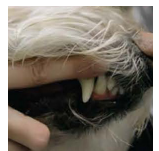


Step One: Start by gently handling the muzzle area on a regular basis.



Step Two: Introduce pet-friendly toothpaste.

- 🐾 Introduce a small amount of toothpaste with your index finger.
- 🐾 Start with the canine teeth (fangs) and gradually work around the entire mouth.



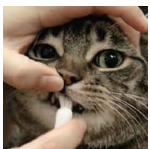
Step Three: Introduce a pet recommended toothbrush.

- 🐾 Wet the bristles and place a line of toothpaste on the brush
- 🐾 Hold the toothbrush like a pen and concentrate on the canine teeth using a gentle circular motion.



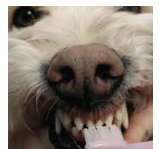
Step Four: You can now start to work along the top teeth from the canines to the back of the mouth using a gentle circular motion.

- 🐾 Gradually build up the amount of time and pressure applied to each tooth.
- 🐾 It is not necessary to brush the inside surfaces.



Step Five: Brushing the front teeth.

- 🐾 Gently take hold of the muzzle and lift the upper lip.
- 🐾 Use an up and down motion.



HELPFUL TIPS

Start brushing your pet's teeth at an early age.

Associate treats with the process.

For best results, continue brushing every day.

If you have any questions, feel free to give us a call!

7791 52ND Street North Pinellas Park, FL 33781
pah@pinellasvet.com (727) 546-0005