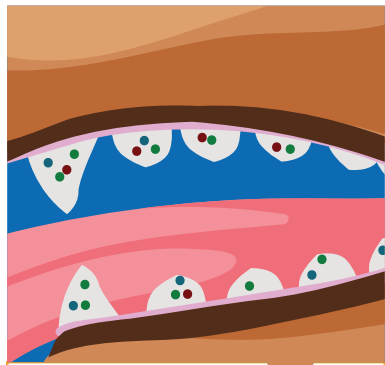


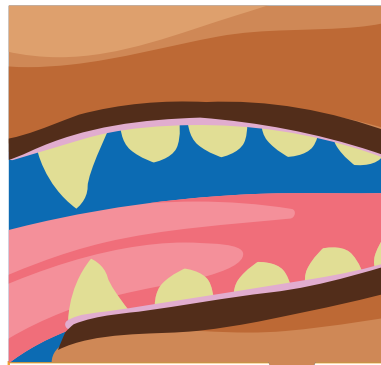


# How Tartar and Plaque Buildup Over Time



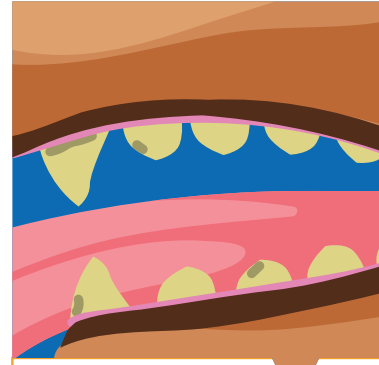
## BACTERIA ACCUMULATES

Your pet's mouth naturally plays host to a large number of bacteria - some good and some bad. Left unchecked the bad bacteria accumulate and multiply, setting the stage for the formation of biofilm.



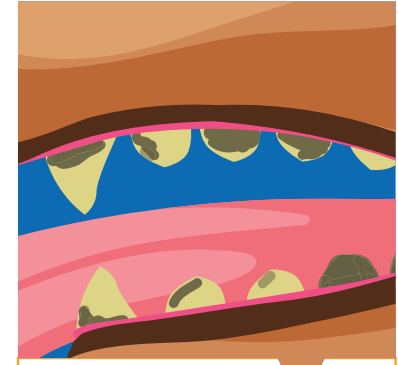
## BIOFILM FORMS

In as little as 6-8 hours after cleaning, bacteria organize to form biofilm that covers the teeth and gum surfaces. This biofilm continues to grow and thicken over time.



## DENTAL PLAQUE APPEARS

As the biofilm thickens, it turns into dental plaque with is an indication of significant accumulation of bacteria on the teeth and gums. Over time, dental plaque becomes laden with minerals.



## TARTAR INVADES

As the accumulated minerals in the dental plaque harden, they form a solid yellow-brown buildup know as tartar. Left untreated, this leads to the development of gingivitis and the beginning stages of periodontal disease.

**If you have any questions please don't hesitate to give us a call!**

7791 52ND Street North Pinellas Park, FL 33781  
pah@pinellavet.com (727) 546-0005